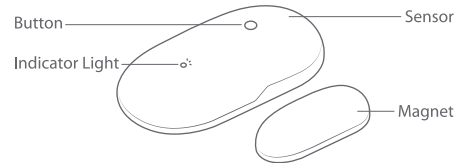


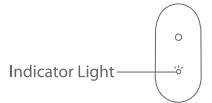
Door Sensor Introduction

Terncy Door Sensor is a ZigBee endpoint accessory, that connects to Terncy Home Center. It's a wireless contact sensor capable of detecting the status of your door or window, with a temperature measurement feature.



1

Indicator Light State

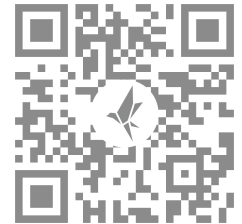


State	Green LED fast flashing (10 flashes per second)	Connecting to Home Center nearby
	Green LED slow flashing (1 flash every 2 seconds)	Successfully connected to Home Center
	Yellow LED medium flashing (4 flashes per second)	Failed to connect to Home Center

2

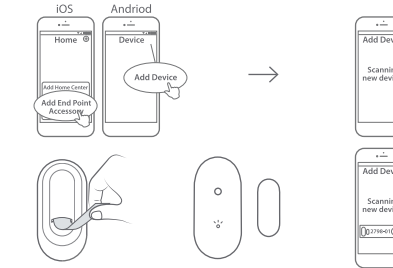
Download and Install App

Download Terncy app from application markets or scan the QR code below. Follow the direction in the app to connect your accessory to Home Center.



3

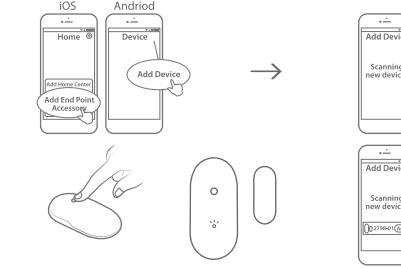
Setup Accessory for The First Time



1. Navigate to "Add Device" page in the app.
2. Remove the insulating strip on the sensor. The LED will start flashing green.
3. The app will automatically detect the accessory, typically within 5 seconds.

4

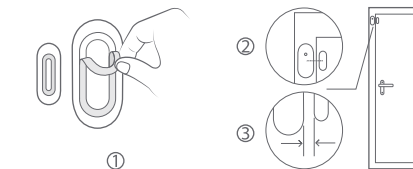
Setup Accessory Again



1. Navigate to "Add Device" page in the app.
2. Press and hold the button for 6 seconds. The LED will start flashing green.
3. The app will automatically detect the accessory, typically within 5 seconds.

5

Physical Installation



1. Peel off the protective layer from the adhesive tape.
 2. Keep the two components aligned in the middle.
 3. Ensure the magnet accessory is no further than 25mm from the sensor.
- * **Please do not apply it to metal door or door frame.**
 - * **Please keep the area where the adhesive tape sticks on clean and dry.**
 - * **Please do not drop the sensor.**

6



WeChat official account

Contact Us

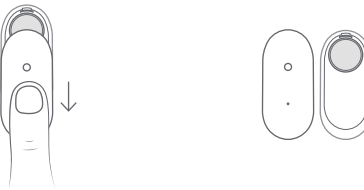
Online Support: <http://www.xiaoyan.io/service>

E-mail: support@xiaoyan.io

Manufacturer: Shanghai Xiaoyan Technology Co., Ltd.

Address: Room 503, Building B, NO.2305, Zuchongzhi Road, Shanghai, China

Battery Replacement



1. Hold the sensor, push down and take off the cover.
2. Replace the CR1632 battery with a new one.

7

Automation

(This function works properly with HomeKit only when meeting the requirements in Notes 2 of the latter part.)



A warning will be triggered when the door is forced open.

8

Automation

(This function works properly with HomeKit only when meeting the requirements in Notes 2 of the latter part.)

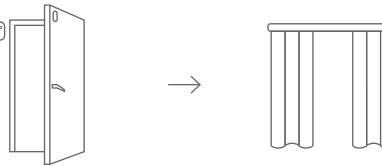


Light will be lit up automatically when opening the door.

9

Automation

(This function works properly with HomeKit only when meeting the requirements in Notes 2 of the latter part.)

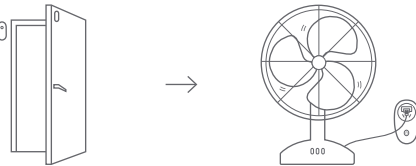


Curtain will be pulled open automatically when opening the door.

10

Automation

(This function works properly with HomeKit only when meeting the requirements in Notes 2 of the latter part.)



Implements automation of electrical appliances as the status of the door changes.

11

Notes 1

1. Do not soak or wash your devices.
2. Keep products away from fire, high temperature or any other extreme environment.

Notes 2

Home Center is required to enable Door Sensor to work with HomeKit technology. Visit <http://www.xiaoyan.io> for more details.

12



Manual of
Terncy Door Sensor

Warranty Card

Xiaoyan's after-sales service includes:

Xiaoyan Tech shall remove any physical defects inherent in the device which are listed on the warranty card, free of charge, by replacing (at the sole discretion of Xiaoyan Tech) the defective device within the period of 15 days from the date of reception by the consumer, and by repairing the defective components of the device within the period of 12 months from the date of reception by the consumer.

*** The warranties may be varied in different countries and regions.**

The Warranty Applies to:

1. surface damages resulting from mishandling during transport or defects inherent in material or structure of the products;
2. failure of the buttons or indicator lights;
3. failure of wireless communication.

The Warranty Does Not Apply:

1. when the warranty period expired;
2. to damages resulting from repairing and introducing alterations by unauthorized persons;
3. to damages caused by using accessories not recommended by the manufacturer;
4. to damages resulting from other irresistible causes.