

Warranty Card

Xiaoyan's after-sales service includes:

Xiaoyan Tech shall remove any physical defects inherent in the device which are listed on the warranty card, free of charge, by replacing (at the sole discretion of Xiaoyan Tech) the defective device within a period of 15 days from the date of receipt by the consumer, and by repairing the defective components of the device within the period of 12 months from the date of receipt by the consumer.

*** The warranty may vary in different countries and regions.**

The Warranty Applies to:

1. surface damage resulting from mishandling during transport, or defects inherent in material or structure of the products;
2. failure of the buttons or indicator lights;
3. failure of wireless communication.

The Warranty Does Not Apply:

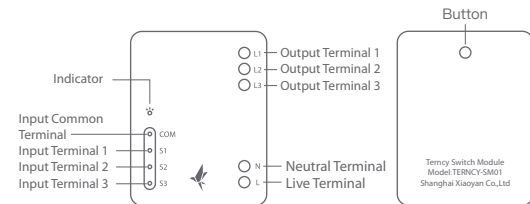
1. when the warranty period has expired;
2. to damage resulting from repairing and introducing alterations by unauthorized persons;
3. to damage caused by using accessories not recommended by the manufacturer;
4. to damage resulting from other avoidable causes.

Switch Module Introduction

The Terncy Switch Module (Model: TERNCY-SM01-D3), is an easy to install accessory. By installing it into switches, sockets or other electrical devices, you can create a remote connection for smart lighting, use voice control, create automations, or other functions via Home center.

* Switch Module follows ZigBee 3.0 wireless protocol.

* It needs to be connected to N and L line at the same time.



1

Guidance

— N line
— L line



Fig.1

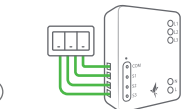


Fig.2



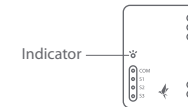
Fig.3

* Power off during installation to prevent electric shock.

1. Connect L and N line
Connect L line to L, N line to N. (Fig.1)
2. Connect input terminal
Connect three routes of lines to S1, S2, S3 respectively. (Fig.2)
3. Connect output terminal
Connect L1, L2, L3 to devices. (Fig.3)

2

Indicator Light State



Indicator State	White light always on	Powered on
	White light flashes 10 times per sec.	Connecting to Home Center nearby
	White light flashes every 2 sec.	Successfully connected to Home Center
	White light flashes 4 times per sec.	Failed to connect to Home Center

3

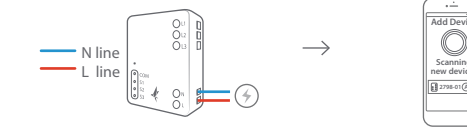
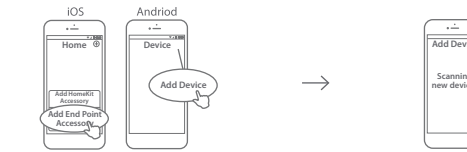
Download and Install App

Download the Terncy app from app markets or scan the QR code below. Follow the instructions within the app to connect the Switch Module to Home Center.



4

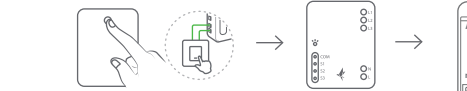
Setting Up The Accessory for The First Time



1. Click the "Add Device" button in the Device tab of the Terncy app.
2. The new device can be found after 3 seconds under power-on conditions.

5

Set Up The Accessory Again



1. Click the "Add Device" button in the Device tab of the Terncy app.
2. If the module is out of the junction box, long press the button for 6 secs. The device will be found after 3 secs.
3. If the module is installed inside the junction box, find the device by pressing the rocker switch 5 times in 2 secs, or pressing the button switch 10 times in 4 secs.

6



WeChat official account

Contact Us

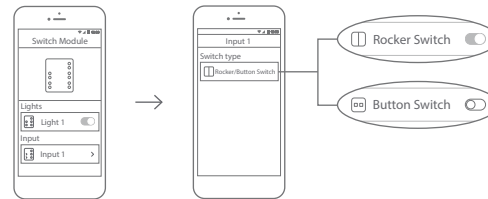
Online Support: <http://www.xiaoyan.io/service>

E-mail: support@xiaoyan.io

Manufacturer: Shanghai Xiaoyan Technology Co., Ltd.

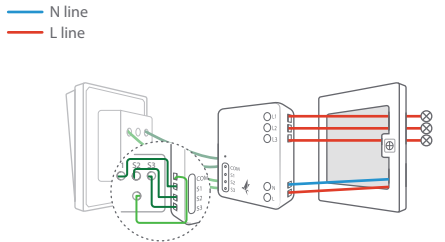
Address: Room 502, Building E, NO.666, Shengxia Road, Shanghai, China

Set Switch Type



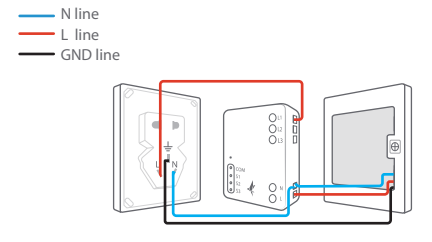
7

Application Scenarios



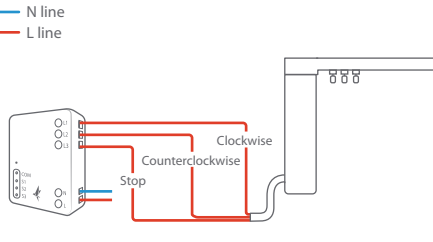
8

Application Scenarios



9

Application Scenarios



10

Notes 1

1. Do not soak or wash your devices.
2. Keep products away from fire, high temperatures or any other extreme environment.
3. After sales service is limited to mainland China.

Notes 2

Home Center is required to enable Switch Module to work with HomeKit technology. See <http://www.xiaoyan.io> for more details.

11

Manual of
Terncy Switch Module

